

SWITCHING DEVICES

Toggle Boot Seal

Gray toggle boot seal threads over 15/32-32 switch mounting stem to protect switch from moisture and dirt. Other colours available, minimum quantities may apply.

Product # E7581264



Illuminated Toggle Switches

Product # E755410901 SPST 2-Position HD Switch With .250" Blade Terminals, O-Ring Sealed Mounting Stem Illuminated Red 1 1/16" Long Toggle When In On Position. Up=On, Down=Off. Mounting Stem 15/32-32 Thread x 15/32" OAL Fits Up To 1/8" Thick Panel. Includes Black Face Nut And Plated Hex Back Nut. 25 Amp Rated. Screw Terminal Version Also Available Under Product # E7554109.



E755410901

Product # E7521362 SPST 2-Position Light Duty Switch With .250" Blade Terminals, Polycarbonate Housing And 1-1/16" Red Illuminated Wedge Style Toggle. Fits Panels Up To 1/8" Thick. Includes Black Plastic Face Nut. 20 Amp Rated At 12 Volts. **** Other Illumination Colours Are Available. Please Contact Our Sales Department With Your Requirements. ****



E7521362

Product # E7571500 SPST 2-Position Light Duty Switch With .250" Blade Terminals, Polycarbonate Housing With 1-1/32" Red LED Tip Illumination. Fits Panels Up To 1/8" Thick And Includes Black Plastic Face Nut. 20 Amp Rated At 12 Volts. **** Other Illumination Colours Are Available. Please Contact Our Sales Department With Your Requirements. ****



E7571500

Product # E7573050 SPST 2-Position HD Switch With .250" Blade Terminals, Red LED Tipped 1" Long Wedge Style Toggle. Fits Panels Up To 3/16" Thick. Includes Nickel Plated Face Nut. 30 Amp Rated At 12 Volts. **** Also Available With Green & Blue LED Illumination. Please Contact Our Sales Department With Your Requirements. ****



E7573050

Rocker Switches & Accessories

Pomar offers an extensive range of rocker switches for transportation and industrial use. If you do not see the profile or style you require, please contact our sales department as space limitations allow us to only illustrate our most popular configurations. All ratings are expressed at 12 Volts DC.

Full Size Weather Resistant Universal Rocker Switches

Snap-in mounting to standard hole size of .830" x 1.45" with panel thickness of .093" to .187". Heavy duty 25 amp rated switches with .250" blade terminals.

Product # E755802701 SPST Off-On With 2 Blade Terminals - Not Illuminated

Product # E755832701 SPST Off-On With 3 Blade Terminals - Single Red Pilot Illumination

Product # E755802703 SPDT On-Off-On With 3 Blade Terminals - Not Illuminated

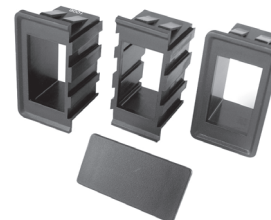
Product # E755832706 SPDT On-Off-On With 4 Blade Terminals - Two Red Pilot Illumination



SWITCHING DEVICES

Modular Brackets

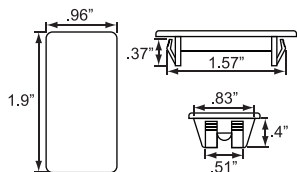
Modular brackets allow gang mounting of full size rocker switches in parallel mounting to any number of switches. Individual bezels can be mounted within a panel cutout or hung utilizing bracket mount kit. Individual bezels slide together for multiple combinations. Black molded plastic.



Product # E758716701 Bracket Kit Allows For Up To 6 Bezels In Hung Configuration (Not Shown)

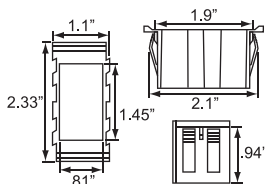
Product # E7598628

Blank Panel Plug



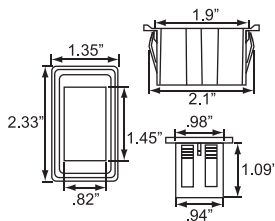
Product # E75821592

Center Bezel



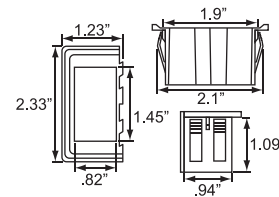
Product # E75821593

Single Switch Bezel



Product # E75821591

End Bezel



Medium Size Universal Rocker Switch

Snap-in mounting to .500" x 1" rectangular hole size and panel thickness from .025" to .170". Switch body is black nylon with red rocker illuminated when in the "On" position. 3 x .250" blade terminals rated at 20 amps.

Product # E7573355

**** Single Rocker Switch Panel For Above Switch Black Plastic Product # E7573575 (Not Illustrated) ****



Mini Round Hole Universal Rocker Switches

Snap fit into .795" diameter mounting holes. Available in both AC = 110V and DC = 12V in configurations shown. Nylon switch body with .187" blade terminals silver plated brass meeting UL flammability rating UL-94V-2.



Non Illuminated			
<i>Specifications:</i> 10 Amp / 125 Volt AC 6 Amp / 250 Volt AC 10 Amp / 12 Volt AC			
Product #	Poles	Configuration	Description
E75750020	SPST	On - Off	Black
E75750066	SPST	On - Off	Bi-Colour Black/Red Rocker
E75753556	SPST	On - Off	Black With White Imprint On-Off
E75750030	SPST	On - Off	Black With White Dot On Position
E75750031	SPST	On - Off	Black With White Dash "On" - O "Off"
E75750067	SPST	Momentary On - Off	Black
E75750022	SPDT	On - Off	Black

SWITCHING DEVICES

Mini Round Hole Universal Rocker Switches

AC Illuminated			
<i>Specifications:</i> 10 Amp / 125 Volt AC 6 Amp / 250 Volt AC			
Product #	Poles	Configuration	Description
E75750025	SPST	On - Off	Red Illuminated
E75750076	SPST	On - Off	Red LED Illuminated
E75750028	SPST	On - Off	Amber Illuminated
E75750077	SPST	On - Off	Amber LED Illuminated
E75750029	SPST	On - Off	Green Illuminated
E75750078	SPST	On - Off	Green LED Illuminated

DC Illuminated			
<i>Specifications:</i> 10 Amp / 125 Volt DC			
Product #	Poles	Configuration	Description
E75750036	SPST	On - Off	Red Illuminated
E75750000	SPST	On - Off	Red LED Illuminated
E75750037	SPST	On - Off	Amber Illuminated
E75750005	SPST	On - Off	Amber LED Illuminated
E75750031	SPST	On - Off	Green Illuminated
E75750015	SPST	On - Off	Green LED Illuminated

Pilot/Indicator Lamps

Product # E75990801R Indiacator Lamp With Red Lens. Plastic Body With Chrome Bezel Mounts In .500" Diameter Hole. Rated To 3 Amps @ 12 Volts DC. ** *Also Available In Green, Amber & Blue On Special Order ***



E75990801R

Product # E75PL4572R Pilot Lamp With 1/4" Diameter Red Jeweled Lens. Aluminum Body With Single Lead Wire. Mounts Through 5/16" Diameter Hole. Lamp Body .75" Diameter x .875" Long. Overall Length 1-13/16". Replaceable #53 Bulb.



E75PL4572R

Product # E75PL19RD Pilot Lamp With Red Lens & Chrome Plated Brass Bezel 7/8" Diameter. Lamp Body/Mounting Stem Is 3/4" Diameter x 11/16" Length. Single Lead Wire. Replaceable #53 Bulb. Self Grounding In Metal Panels. ** *Also Available With Amber, Blue Or Green Lenses. Call For Availability ***



E75PL19RD

Product # E75PL116RC Pilot Lamp With Red Lens & Satin Finish Aluminum Bezel 15/16" Diameter. Lens Is 5/8" Diameter, Lamp Body/Mounting Stem Is 3/4" Diameter x 3/8" Long. Dual Lead Wires. Replaceable #1893 Bulb. ** *Also Available With Amber, Blue Or Green Lenses. Call For Availability ***



E75PL116RC

Product # E75PL612R Pilot Lamp With Red LED Indicator. Estimated 100,000 Hours Life Expectancy. Mounts in .546" Diameter Mounting Hole. Quick Connect .250" Polarized Blade Terminals For Easy Wiring. ** *Also Available With Amber, Blue Or Green LED's. Call For Availability ***



E75PL612R

Product # E7573581R Mini Indicator Lamp With Red LED Mounts In 5/16" Diameter Hole. Two x 6" 20 Gauge Wire Leads. ** *Also Available With Amber, Blue Or Green LED's. Call For Availability ***



E7573581R