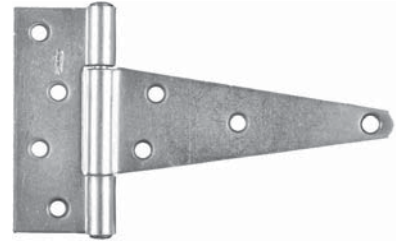


# HINGES

## 1908 Heavy "T" Hinges Zinc Plated Fixed Pin

Part Number	Strap Length	Butt Length	Butt Width	Material Thickness
1908 x 4"	4"	1 - 3/16"	3 - 3/8"	.090"
1908 x 6"	6"	1 - 3/4"	4 - 1/4"	.100"
1908 x 8"	8"	2"	5 - 5/8"	.100"
1908 x 10"	10"	2 - 1/8"	6"	.110"
1908 x 12"	12"	2 - 1/8"	6"	.110"

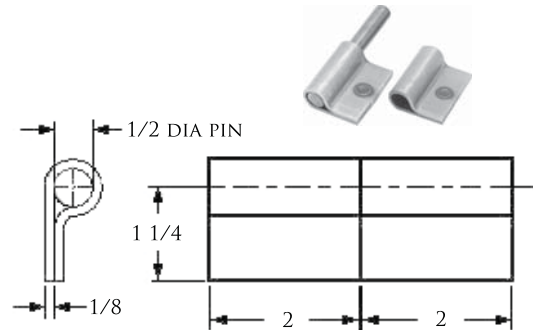


## Lift-Off Welding Hinges

### No. M-1 A Flush Mount Butt Hinge

Weld-on style hinge of steel construction features 1/2" x 4" long pin supplied loose. Each hinge leaf is 2" L x 1-1/4" W from centre of pin. Numerous mounting configurations possible. Plain steel finish.

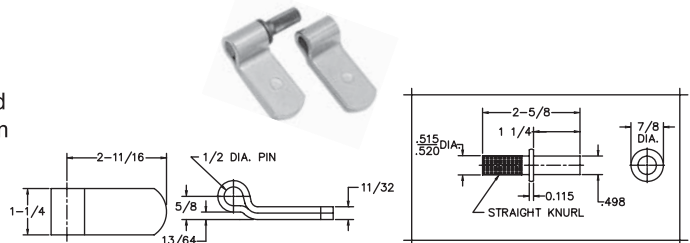
Product # H50M1AXXPL



### No. 2-B Universal Butt Hinge

Universal Weld-on flush type hinge featuring 1/2" knurled pin and 1-1/64" thick leaf material. Each leaf is 1-1/4" L x 2-11/16" W from centre of pin. Plain steel finish.

Product # H502BXXXPL



### No. 6-B Light Duty Cabinet Hinge

Light duty hinge for use on sheet metal and electrical cabinets and enclosures. Features removable pin and zinc plated finish standard.

Product # H506BXXXZN

