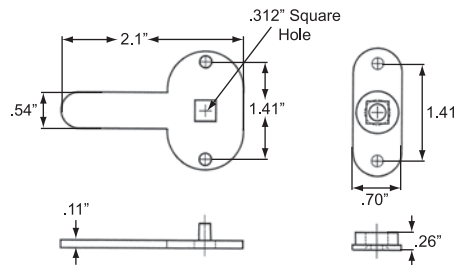


HANDLE LATCH CAMS & LATCH ACCESSORIES

Three Point Cam With Back Plate

Die cast cam and plate allows use of # RG561ZN rod guide and # R5616ZN or # R5618ZN round 5/16" diameter lock rods to make an economy latch assembly. Use with any 5/16" square shank handle.

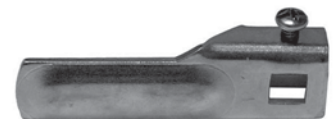
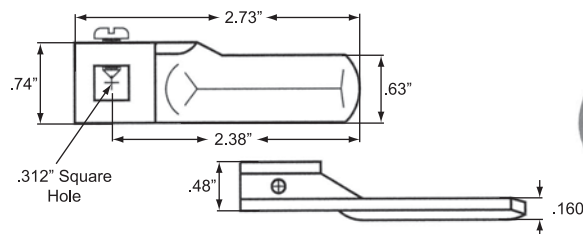
Product # H59100021/8ZN



Single Point Adjustable Cam

Use 5/16" square shank handle.

Product # H59DL10XZN



Lock Rods



	Product #	Description
A	H60R3116ZN	36" Zinc Plated Flat Rod For 311 Series Locks
	H60R3118ZN	48" Zinc Plated Flat Rod For 311 Series Locks
B	H60R9436ZN	1/4" x 36" Zinc Plated Rod
C	H60R1056ZN	3/8" x 36" Zinc Plated Rod For 105 & 107 Series Rod Locks Round .281" Diameter Hole
	H60R1058ZN	3/8" x 48" Zinc Plated Rod For 105 & 107 Series Rod Locks Round .281" Diameter Hole
D	H60R5616ZN	5/16" x 36" Zinc Plated Rod With .250" Diameter Round Hole
	H60R5618ZN	5/16" x 48" Zinc Plated Rod With .250" Diameter Round Hole
E	H60R167XZN	1/2" Dia. x 25-15/16" Overall Length Zinc Plated Rod
F	H60R1146ZN	3/8" x 36" Zinc Plated Rod With Slot Style Hole
	H60R1148ZN	3/8" x 48" Zinc Plated Rod With Slot Style Hole

Rod Guides

	Product #	Description
A	H60RG167ZN	Zinc Plated Rod Support Bracket. Use With 1/2" Dia. Round Rod
B	H60RG561ZN	Zinc Plated One Piece Rod Guide. Use With 5/16" Dia. Round Rod
C	H60RG105ZN	Zinc Plated Anti-Rattle Rod Guide. Use With

