

# ADJUSTABLE CAM TYPE BAR LOCK

## 269 And 369 Series Two And Three Point Ductile Iron Holdtite Door Lock

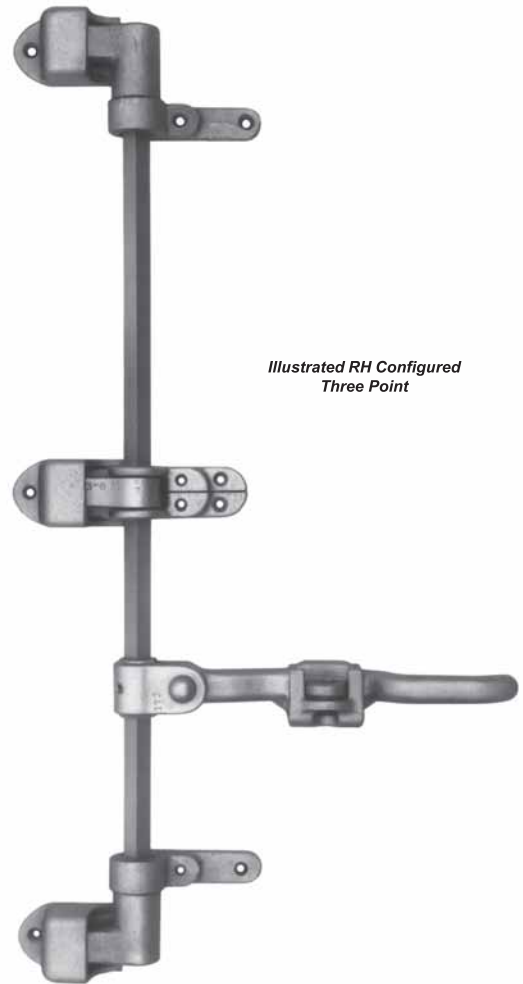
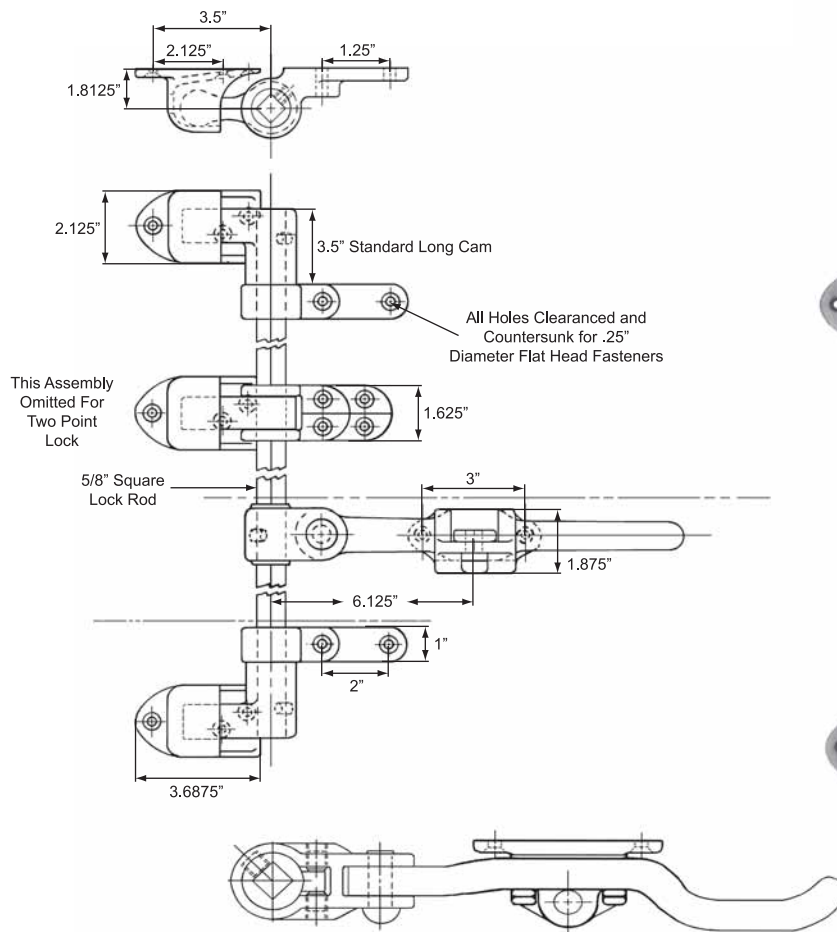
Designed to provide years of trouble free service with low maintenance. Holdtite door locks feature fully adjustable handle to seal preload and installation without welding. Ideally suited to refrigerated and heavy duty applications. Available in silver powdercoat or 304 polished stainless steel with 5/8" diameter square rod / tube available separately. Stocked standard with 3.5" long style end cams and regular handle keeper.

**Product # H57269XXPC** Two Point Silver Powdercoat

**Product # H57269XXSS** Two Point Polished Stainless Steel

**Product # H57369XXPC** Three Point Silver Powdercoat

**Product # H57369XXSS** Three Point Polished Stainless Steel



# ADJUSTABLE CAM TYPE BAR LOCK

## Replacement Parts 269 and 369 Series Locks

Silver powder coat parts are listed, substitute "PC" with "SS" for stainless.

**Product # H60369BBPC** End Cam Bearing Bracket

**Product # H60369CLPC** Standard Long Style End Cam 3.5" Length

**Product # H60369CKPC** Cam Keeper

**Product # H60369CCLPC** Center Third Point Cam Lug

**Product # H60369BCBPC** Center Cam Lug Bottom Bearing Half Support

**Product # H60369TCBPC** Center Cam Lug Top Bearing Half Support

**Product # H60369HHPC** Adjustable Handle Assembly

**Product # H60369HKPC** Standard Handle Keeper

## Options:

**Product # H60148XXCA** Silver Powder Coat Gravity Swing Hasp

**Product # H60174XXCA** Silver Powder Coat Inside Safety Release

**Product # H60175XXCA** Silver Powder Coat Center Support Bearing Assembly

**Product # H60369SCPC** Silver Powder Coat Short Style End Cam 2.25" Long



H60148XXCA



H60174XXCA



H60175XXCA

## Square Bar Lock Rods

**Product # H60R100XCA** 5/8" x 96" Square Plated Steel Lock Rod

**Product # H60R108XCA** 5/8" x 108" Square Plated Steel Lock Rod

**Product # H60R72096SS** 5/8" x 96" Square Stainless Tubing

**Product # H60R72108SS** 5/8" x 108" Square Stainless Tubing