

CONVEX BLIND SPOT MIRRORS

5" Round Center Stud Mount Convex Mirror

Complete with "L" bracket. Stainless steel head and bracket with plated hardware.

Product # M65CX500SS



6" Round Center Stud Mount Convex Mirror

Complete with "L" bracket. Stainless steel head and bracket with plated hardware.

Product # M65CX600SS



7.5" Round Convex Center & Offset Stud Mount Mirror

Complete with "L" bracket. Stainless steel with plated hardware.

Product # M65CX750SS Center Mount

Product # M65CX755SS Offset Mount

*Offset Mount
Illustrated*



8.5" Round Convex Center & Offset Stud Mount Mirror

Complete with "L" bracket. Stainless steel with plated hardware.

Product # M65CX850SS Center Mount

Product # M65CX855SS Offset Mount

*Center Mount
Illustrated*



8.5" Round Heated Convex Center & Offset Stud Mount Mirror

Complete with "L" bracket. Stainless steel with plated hardware.

Product # M65CX858SS Center Mount

Product # M65CX859SS Offset Mount

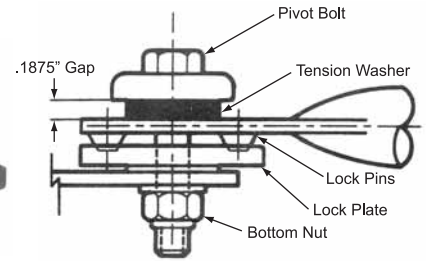
*Center Mount
Illustrated*



BRACKETS, CLAMPS & ACCESSORIES

Mirror Loop Replacement Rubber Preset Pivot Kit

Contains parts to replace one pivot point. Includes rubber tension washer, tension washer cap, lock plate, special lock washer, pivot bolt, flat washer and lock nut.



Product # M60748009

Mirror Head Clamp Kits



Stainless 3/4" O.D. Tubing
Product # M60704068



Stainless Flat Clamp 3/4" O.D. Tubing
Product # M60704066



Stainless Twist Clamp 3/4" O.D. Tubing
Product # M60704065



Black Nylon Clamp 3/4" O.D. Tubing
Product # M60748416

Clamp & Tubing Arm Kit For Round Blind Spot Mirrors

For mirror heads from 6" to 8.5" diameter. Overall length 6". Clamps to 3/4" O.D. mirror arm tubing.

Product # M60723057



Stick-On Convex Spot Mirrors

Self adhesive pad mounting.

- Product # M60723050 2" Round
- Product # M60723060 3" Round
- Product # M60723065 3-3/4" Round
- Product # M60723068 Velvac 3-3/8" Wedge
- Product # M60723075 4" x 5-1/2" Rectangular



Round



Wedge



Rectangular

Universal West Coast Mirror Arm Kit

Finished as noted with plated hardware. Kit provides mounting for one mirror head.

**** Two Kits Required Per Vehicle Application ****

- Product # M65WC3670SS Stainless Steel
- Product # M65WC3671BK Black Powder Coat Finish
- Product # M65WC3672WH White Powder Coat Finish

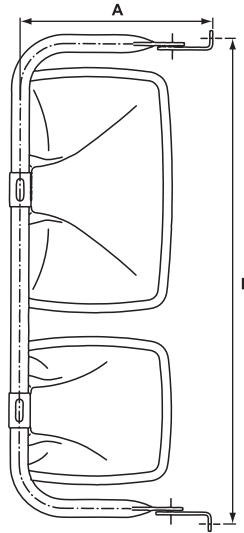


WALK-IN VAN & BLIND SPOT MIRROR SYSTEMS

Walk-In Van Mirror Systems

Models available for most Olson, Utilimaster and Union City walk-in vans. Sold in pairs only. Loop tubing is 3/4" O.D.

Product #	Description & Application	"A"	"B"
M60712323	Stainless With Preset; Olson & Utilimaster	10.56"	30.57"
M60713404	Stainless With Preset; Utilimaster	11.69"	33.33"
M60724007	Stainless No Preset; Universal Fit	10.42"	30.37"



Blind Spot Mirror Systems

Universal mounting bracket allows for rear mounting on flat mounting surfaces such as walk-in van and cube van bodies. 10" wide view convex mirror head with plexiglass lens features 5/16-18 Duraball® ball joint.

Product # M60712643 Stainless Steel Kit

Product # M60712644 White Powder Coated Steel

Replacement Parts

Product # M60709217 White 10" Convex Head Only

Product # M60709218 Stainless 10" Convex Head Only



**** Specific Crossview Blind Spot Mirror Kits And Parts Are Available For Conventional Van Applications (Ford, Chev/GMC And Dodge Including Sprinter) Plus LLV Postal Applications. Contact Our Sales Department With Your Requirements. ****

BLIND SPOT MIRROR SYSTEMS

Front Hood Mount & Cab Mounted Blind Spot Mirror Systems

Corrosion resistant stainless steel tubing brackets with chrome plated die cast mounting base. Mirror heads are 8.5" O.D. with Duraball® studs.



Universal / Adjustable



Fixed Arm Lane Change



Fixed Arm Dual View

Universal / Adjustable

Used on both sides of the vehicle for either lane change or front crossview. Includes straight extension for lane change use and bent extension for front cross view.

Product #	Description
M60714620	Mirror And Bracket Kit With Standard Convex
M60714621	Mirror And Bracket Kit With Wide View Convex

Fixed Arm Lane Change

May be used in right or left hand installations. Provides view of the blind spot along side of vehicle.

Product #	Description
M60714623	Mirror And Bracket Kit With Standard Convex
M60714624	Mirror And Bracket Kit With Wide View Convex

Fixed Arm Dual View

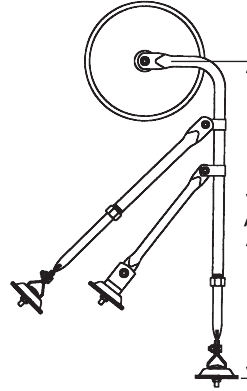
Specific to right or left hand installation. Provides view across the front and down sides of vehicle.

Product #	Description	Application
M60714626	Mirror And Bracket Kit With Standard Convex	Right Hand
M60714627	Mirror And Bracket Kit With Standard Convex	Left Hand
M60714628	Mirror And Bracket Kit With Wide View Convex	Right Hand
M60714629	Mirror And Bracket Kit With Wide View Convex	Left Hand

Tripod Three Bell Style Mirror Kits

Feature 8.5" O.D. convex mirror head and all stainless construction with two models allowing configuration to most hoods.

Product #	Description	"A"
M60714721	Mirror Kit - Short Tripod	17.5" - 24.5"
M60713444	Mirror Kit - Standard Tripod	21" - 32.75"
M60708441	Replacement Mirror Head 8.5" Center Duraball® Stud	



Economy Tripod

Stainless construction with zinc plated hardware and ribbed back convex mirror. 8.5" diameter.

Product #	Description	"A"
M60715779	Mirror Kit	24.5" - 35"

Economy Hood Mount Mirror Kit

Universal RH or LH mounting with 8.5" O.D. convex. All stainless construction.



Product # M60714948 Mirror Kit With 11" Extension

Over Door Convex Mirror

Over door convex mirror with bracket mounts above exterior curbside window for greater blind spot visibility. Glass size 4" x 8" convex.

Product # M60715198

