

# W-STYLE PARTS

## W-Style Bottom Roller Holders

Single stud assembly. Zinc plated.

**Product # H67W1371**

Double hole cover only. Black E-Coat.

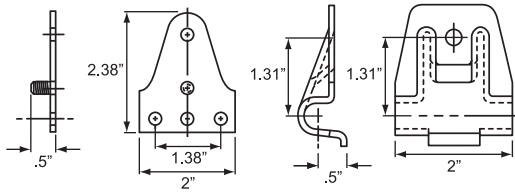
**Product # H67W1208BK**

Double stud inner base only. Black E-Coat.

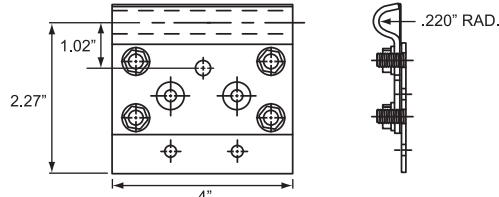
**Product # H67W2032BK**

HD bottom roller holder assembly. Black E-Coat.

**Product # H67W7181BK**



H67W1371 Illustrated



H67W7181BK Illustrated



## W-Style End Hinges & Parts

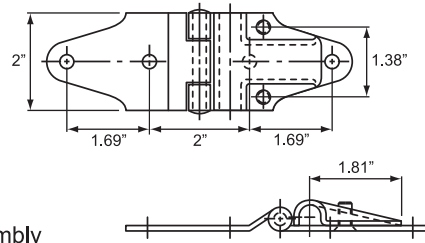
Black E-Coat finished steel or stainless.

**Product # H67W1209BK** Complete Hinge Assembly

**Product # H67W1208BK** Roller Cover Only

**Product # H67W1207BK** Hinge Only

**Product # H67W1209SS** Stainless Complete Hinge Assembly

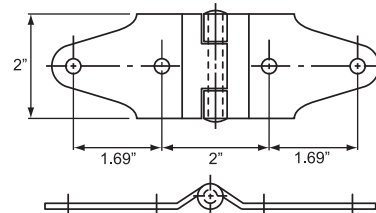


## W-Style Center Hinge

Black E-Coat finished steel or stainless.

**Product # H67W15BK** Black E-Coat Hinge

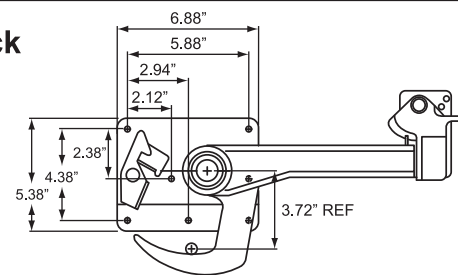
**Product # H67W15SS** Stainless Hinge



## W-Style Dry Freight Door Cam Lock

**Product # H67W77BK** Black E-Coat Finish  
"J" Cam Lock Handle  
With Offset Back Plate

**Product # H67W2766BK** Black E-Coat Finish  
Handle Keeper



## W-Style Weld In Lock Catch Plate

Plain steel.

**Product # H67W2804**

